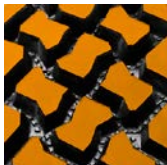
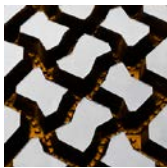


SAILUN S758 ON/OFF ROAD TRACTION

Code	Size	LI / SR	PR	T.D.	RIM	O.D.	S.W.	S.L.R.	L.C.C.		
									32nds	in.	in.
									lbs.	lbs.	psi
S8244751	11R22.5	146/143 G	16	32	8.25	42.2	10.9	19.6	6610	6005	120
S8244758	11R24.5	149/146 G	16	32	8.25	43.9	10.9	20.6	7160	6610	120



The S758 is designed for severe off-road applications. With an extra-deep 32/32" tread depth and a rubber compound engineered to resist the most demanding environments, the S758 is ideal for construction, logging, and off-road environments. Stone ejectors resist the damages caused by stone retention, and an open shoulder with tapered sidewalls aid in lateral stability.

Features & Benefits

- Open grooves to maximize self-cleaning.
- Stone ejectors protect tire against stone drilling.
- Extra deep tread (32/32") and M&S lug pattern designed specifically for on-and-off road applications.

Applications:

- Construction
- Logging

