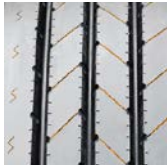


SAILUN **S637 REGIONAL ALL-POSITION**

Code	Size	LI / SR	PR	T.D.	RIM	O.D.	S.W.	S.L.R.	L.C.C.		
									32nds	in.	in.
S8244393 *	235/85R16 *	126/123 L	14	12	6.50	31.7	9.3	14.7	3750	3415	110
S8244379	215/75R17.5	135/133 L	16	16	6.00	30.4	8.1	14.2	4805	4540	125
S8244381	235/75R17.5	143/141 L	16	17	6.75	31.6	8.9	14.7	6005	5675	125
S8244383	225/70R19.5	128/126 L	14	16	6.75	32.0	8.6	14.9	3970	3750	110
S8254387	245/70R19.5	133/131 M	14	17	7.50	33.1	9.6	15.4	4540	4300	110
S8244332	265/70R19.5	140/138 M	16	18	7.50	34.2	10.2	15.8	5510	5205	112
S8254389	255/70R22.5	140/137 M	16	17	7.50	36.7	9.7	17.1	5510	5070	120
S8254392	275/70R22.5	148/145 M	16	19	8.25	37.9	10.7	17.6	6490	6395	130

* All steel construction specifically designed for Trailer application only.



The S637 is a versatile regional all-position tire, featuring five extra-wide ribs for exceptional stability at all speeds. An extra-wide solid shoulder resists damage caused by high-scrub applications, while a mirrored tread design ensures even wear. Wide grooves are designed for hydroplaning resistance, while a long-life rubber compound is engineered for extended tread life.



Features & Benefits

- Multi-sipes improve traction in wet conditions and dissipate heat for prolonged tread life.
- Shallow tread designed to reduced rolling resistance for improved fuel economy.
- Unique tread wall grooves help reduce irregular wear and improve traction.



Applications:

- Pickup & Delivery Trucks
- Intrastate & Interstate Buses
- Regional Trucks
- Long Distance Trucks
- Tractor Trailers
- Low Platform Trailers

