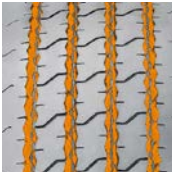


SAILUN S607 PREMIUM REGIONAL STEER / ALL-POSITION

Code	Size	LI / SR	PR	T.D. 32nds	RIM in.	O.D. in.	S.W. in.	S.L.R. in.	L.C.C.		
									Single lbs.	Dual lbs.	A.P. psi
S8244871	315/80R22.5	154/151 L	18	19	9.00	42.6	12.1	19.8	8270	7610	120



The S607 is a premium all-position regional steer tire, designed with extra wide shoulders that resist curbing damage and stone ejector buttons to reduce stone retention. Full-length sipes built into tread blocks effectively channel water for exceptional wet traction. The S607 is very versatile, suitable on all regional applications such as buses and concrete trucks.



Features & Benefits

- 5-rib design and wide shoulders for improved stability.
- Tread profile designed to reduce rolling resistance and improve fuel economy for improved stability and mileage.
- Interlocking multi-sipes improve traction in wet conditions and increase stability.



Applications:

- Dump Trucks
- Mix Concrete Trucks
- Intrastate & Interstate Buses
- Local Buses
- Regional Trucks
- Long Distance Trucks

