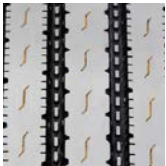
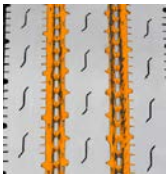


SAILUN S605 EFT ULTRA PREMIUM LINE-HAUL STEER

Code	Size	LI / SR	PR	T.D. 32nds	RIM in.	O.D. in.	S.W. in.	S.L.R. in.	L.C.C.		
									Single lbs.	Dual lbs.	A.P. psi
S8200179	11R22.5	144/142 M	14	18	8.25	41.3	10.9	19.3	6,175	5,840	105
S8200180	11R22.5	146/143 M	16	18	8.25	41.3	10.9	19.3	6,610	6,005	120
S8200187	11R24.5	146/143 M	14	18	8.25	43.4	10.9	20.3	6,610	6,005	105
S8200182	11R24.5	149/146 M	16	18	8.25	43.4	10.4	20.3	7,160	6,610	120
S8200183	295/75R22.5	144/141 M	14	18	8.25	40.0	10.8	18.7	6,175	5,675	110
S8200185	285/75R24.5	144/141 M	14	18	8.25	41.4	10.8	19.4	6,175	5,675	110



The S605 EFT is Sailun's premium line-haul steer tire, featuring a decoupling groove and five wide ribs for a stable ride at all speeds. Stone ejectors minimize tire damage, while extra-wide grooves and S-sipes improve traction for excellent hydroplaning resistance.



Features & Benefits

- SmartWay® Verified - approved for use on EPA SmartWay® certified equipment
- S-sipes improve traction in wet conditions and dissipate heat for prolonged tread life.
- Unique tread wall bite edges reduce irregular wear and improve traction.
- Stone ejectors protect tire from stone drilling.
- Decoupling groove helps to minimize irregular wear.



Applications:

- Intrastate & Interstate Buses
- Regional Trucks
- Long Distance Trucks



SMARTWAY VERIFIED TIRE:
APPROVED FOR USE ON EPA SMARTWAY CERTIFIED EQUIPMENT